

AJA SRExpress

**File Transfer
Application**

Published: 7/26/2012

Installation and Operation Guide

B e c a u s e i t m a t t e r s .



Trademarks

AJA®, KONA®, Ki Pro®, and XENA® are registered trademarks of AJA Video, Inc. Because it Matters™, FiDO™, Io HD™ and Io™ are trademarks of AJA Video, Inc. HDMI, the HDMI logo and High-Definition Multimedia Interface are trademarks or registered trademarks of HDMI Licensing LLC. DVI is a registered trademark of DDWG. All other trademarks are the property of their respective holders.

Notice

Copyright © 2012 AJA Video, Inc. All rights reserved. All information in this manual is subject to change without notice. No part of the document may be reproduced or transmitted in any form, or by any means, electronic or mechanical, including photocopying or recording, without the express written permission of AJA Inc.

Contacting Support

To contact AJA Video for sales or support, use any of the following methods:

180 Litton Drive, Grass Valley, CA. 95945 USA

Telephone: 800.251.4224 or 530.274.2048

Fax: 530.274.9442

Web: <http://www.aja.com>

Support Email: support@aja.com

Sales Email: sales@aja.com

When calling for support, have all information at hand prior to calling.

Software License Agreement

AJA VIDEO, INC.

SOFTWARE LICENSE AGREEMENT

PLEASE READ THIS SOFTWARE LICENSE AGREEMENT ("LICENSE") BEFORE USING THE SOFTWARE. BY USING THE SOFTWARE, YOU ARE AGREEING TO BE BOUND BY THE TERMS OF THIS LICENSE. IF YOU ARE ACCESSING THE SOFTWARE ELECTRONICALLY, SIGNIFY YOUR AGREEMENT TO BE BOUND BY THE TERMS OF THIS LICENSE BY CLICKING THE "AGREE/ACCEPT" BUTTON. IF YOU DO NOT AGREE TO THE TERMS OF THIS LICENSE, RETURN THE AJA SOFTWARE TO THE PLACE WHERE YOU OBTAINED IT FOR A REFUND OR, IF THE SOFTWARE WAS ACCESSED ELECTRONICALLY, CLICK "DISAGREE/DECLINE".

IMPORTANT NOTE: To the extent this software may be used to reproduce materials, it is licensed to you only for reproduction of materials you are authorized or legally permitted to reproduce.

1. General. The software and documentation accompanying this License whether on disk, in read only memory, on any other media or in any other form (collectively the "AJA Software") are licensed, not sold, to you by AJA Video, Inc. ("AJA") for use only under the terms of this License, and AJA reserves all rights not expressly granted to you. The rights granted herein are limited to AJA's and its licensors' intellectual property rights in the AJA Software and do not include any other patents or intellectual property rights. You own the media on which the AJA Software is recorded but AJA and/or AJA's licensor(s) retain ownership of the AJA Software itself. The rights granted under the terms of this License include any software upgrades that replace and/or supplement the original AJA Software product.

2. Permitted License Uses and Restrictions. This License allows you to install and use AJA Software on a computer. You may make copies of the AJA Software in machine-readable form for backup purposes only; provided that the backup copy must include all copyright or other proprietary notices contained on the original.

Except as and only to the extent expressly permitted in this License or by applicable law, you may not copy, decompile, reverse engineer, disassemble, modify, or create derivative works of the AJA Software or any part thereof. THE AJA SOFTWARE IS NOT INTENDED FOR USE IN THE OPERATION OF NUCLEAR FACILITIES, AIRCRAFT NAVIGATION OR COMMUNICATION SYSTEMS, AIR TRAFFIC CONTROL SYSTEMS, LIFE SUPPORT MACHINES OR OTHER EQUIPMENT IN WHICH THE FAILURE OF THE AJA SOFTWARE COULD LEAD TO DEATH, PERSONAL INJURY, OR SEVERE PHYSICAL OR ENVIRONMENTAL DAMAGE.

3. Transfer. You may not rent, lease, lend or sublicense the AJA Software. You may, however, make a one-time permanent transfer of all of your license rights to the AJA Software to another party, provided that: (a) the transfer must include all of the AJA Software, including all its component parts, original media, printed materials and this License; (b) you do not retain any copies of the AJA Software, full or partial, including copies stored on a computer or other storage device; and (c) the party receiving the AJA Software reads and agrees to accept the terms and conditions of this License. NFR (Not for Resale) Copies: Notwithstanding other sections of this License, AJA Software labeled or otherwise provided to you on a promotional basis may only be used for demonstration, testing and evaluation purposes and may not be resold or transferred.

4. Termination. This License is effective until terminated. Your rights under this License will terminate automatically without notice from AJA if you fail to comply with any term(s) of this License. Upon the termination of this License, you shall cease all use of the AJA Software and destroy all copies, full or partial, of the AJA Software.

5. Limited Warranty on Media. AJA warrants the media on which the AJA Software is recorded and delivered by AJA to be free from defects in materials and workmanship under normal use for a period of ninety (90) days from the date of original retail purchase. Your exclusive remedy under this Section shall be, at AJA's option, a refund of the purchase price of the product containing the AJA Software or replacement of the AJA Software which is returned to AJA or an AJA authorized representative with a copy of the receipt. THIS LIMITED WARRANTY AND ANY IMPLIED WARRANTIES ON THE MEDIA INCLUDING, BUT NOT LIMITED TO, THE IMPLIED WARRANTIES OF MERCHANTABILITY, OF SATISFACTORY QUALITY, AND OF FITNESS FOR A PARTICULAR PURPOSE, ARE LIMITED IN DURATION TO NINETY (90) DAYS FROM THE DATE OF ORIGINAL RETAIL PURCHASE. SOME JURISDICTIONS DO NOT ALLOW LIMITATIONS ON HOW LONG AN IMPLIED WARRANTY LASTS, SO THE ABOVE LIMITATION MAY NOT APPLY TO YOU. THE LIMITED WARRANTY SET FORTH HEREIN IS THE ONLY WARRANTY MADE TO YOU AND IS PROVIDED IN LIEU OF ANY OTHER WARRANTIES (IF ANY) CREATED BY ANY DOCUMENTATION OR PACKAGING. THIS LIMITED WARRANTY GIVES YOU SPECIFIC LEGAL RIGHTS, AND YOU MAY ALSO HAVE OTHER RIGHTS WHICH VARY BY JURISDICTION.

6. Disclaimer of Warranties. YOU EXPRESSLY ACKNOWLEDGE AND AGREE THAT USE OF THE AJA SOFTWARE IS AT YOUR SOLE RISK AND THAT THE ENTIRE RISK AS TO SATISFACTORY QUALITY, PERFORMANCE, ACCURACY AND EFFORT IS WITH YOU. EXCEPT FOR THE LIMITED WARRANTY ON MEDIA SET FORTH ABOVE AND TO THE MAXIMUM EXTENT PERMITTED BY APPLICABLE LAW, THE AJA SOFTWARE IS PROVIDED "AS IS", WITH ALL FAULTS AND WITHOUT WARRANTY OF ANY KIND, AND AJA AND AJA'S LICENSORS (COLLECTIVELY REFERRED TO AS "AJA" FOR THE PURPOSES OF SECTIONS 6 AND 7) HEREBY DISCLAIM ALL WARRANTIES AND CONDITIONS WITH RESPECT TO THE AJA SOFTWARE, EITHER EXPRESS, IMPLIED OR STATUTORY, INCLUDING, BUT NOT LIMITED TO, THE IMPLIED WARRANTIES AND/OR CONDITIONS OF MERCHANTABILITY, OF SATISFACTORY QUALITY, OF FITNESS FOR A PARTICULAR PURPOSE, OF ACCURACY, OF QUIET ENJOYMENT, AND NON-INFRINGEMENT OF THIRD PARTY RIGHTS. AJA DOES NOT WARRANT AGAINST INTERFERENCE WITH YOUR ENJOYMENT OF THE AJA SOFTWARE, THAT THE FUNCTIONS CONTAINED IN THE AJA SOFTWARE WILL MEET YOUR REQUIREMENTS, THAT THE OPERATION OF THE AJA SOFTWARE WILL BE UNINTERRUPTED OR ERROR-FREE, OR THAT DEFECTS IN THE AJA SOFTWARE WILL BE CORRECTED. NO ORAL OR WRITTEN INFORMATION OR ADVICE GIVEN BY AJA OR AN AJA AUTHORIZED REPRESENTATIVE SHALL CREATE A WARRANTY. SHOULD THE AJA SOFTWARE PROVE DEFECTIVE, YOU ASSUME THE ENTIRE COST OF ALL NECESSARY SERVICING, REPAIR OR CORRECTION. SOME JURISDICTIONS DO NOT ALLOW THE EXCLUSION OF IMPLIED WARRANTIES OR LIMITATIONS ON APPLICABLE STATUTORY RIGHTS OF A CONSUMER, SO THE ABOVE EXCLUSION AND LIMITATIONS MAY NOT APPLY TO YOU.

7. Limitation of Liability. TO THE EXTENT NOT PROHIBITED BY LAW, IN NO EVENT SHALL AJA BE LIABLE FOR PERSONAL INJURY, OR ANY INCIDENTAL, SPECIAL, INDIRECT OR CONSEQUENTIAL DAMAGES WHATSOEVER, INCLUDING, WITHOUT LIMITATION, DAMAGES FOR LOSS OF PROFITS, LOSS OF DATA, BUSINESS INTERRUPTION OR ANY OTHER COMMERCIAL DAMAGES OR LOSSES, ARISING OUT OF OR RELATED TO YOUR USE OR INABILITY TO USE THE AJA SOFTWARE, HOWEVER CAUSED, REGARDLESS OF THE THEORY OF LIABILITY (CONTRACT, TORT OR OTHERWISE) AND EVEN IF AJA HAS BEEN ADVISED OF THE POSSIBILITY OF SUCH DAMAGES. SOME JURISDICTIONS DO NOT ALLOW THE LIMITATION OF LIABILITY FOR PERSONAL INJURY, OR OF INCIDENTAL OR CONSEQUENTIAL DAMAGES, SO THIS LIMITATION MAY NOT APPLY TO YOU. In no event shall AJA's total liability to you for all damages (other than as may be required by applicable law in cases involving personal injury) exceed the amount of fifty dollars (\$50.00). The foregoing limitations will apply even if the above stated remedy fails of its essential purpose.

8. Export Law Assurances. You may not use or otherwise export or reexport the AJA Software except as authorized by United States law and the laws of the jurisdiction in which the AJA Software was obtained. In particular, but without limitation, the AJA Software may not be exported or re-exported (a) into (or to a national or resident of) any U.S. embargoed countries (currently Cuba, Iran, Iraq, Libya, North Korea, Sudan and Syria) or (b) to anyone on the U.S. Treasury Department's list of Specially Designated Nationals or the U.S. Department of Commerce Denied Person's List or Entity List. By using the AJA Software, you represent and warrant that you are not located in, under control of, or a national or resident of any such country or on any such list.

9. Government End Users. The AJA Software and related documentation are "Commercial Items", as that term is defined at 48 C.F.R. §2.101, consisting of "Commercial Computer Software" and "Commercial Computer Software Documentation", as such terms are used in 48 C.F.R. §12.212 or 48 C.F.R. §227.7202, as

applicable. Consistent with 48 C.F.R. §12.212 or 48 C.F.R. §227.7202-1 through 227.7202-4, as applicable, the Commercial Computer Software and Commercial Computer Software Documentation are being licensed to U.S. Government end users (a) only as Commercial Items and (b) with only those rights as are granted to all other end users pursuant to the terms and conditions herein. Unpublished rights reserved under the copyright laws of the United States.

10. Controlling Law and Severability. This License will be governed by and construed in accordance with the laws of the State of California, as applied to agreements entered into and to be performed entirely within California between California residents. This License shall not be governed by the United Nations Convention on Contracts for the International Sale of Goods, the application of which is expressly excluded. If for any reason a court of competent jurisdiction finds any provision, or portion thereof, to be unenforceable, the remainder of this License shall continue in full force and effect.

11. Complete Agreement; Governing Language. This License constitutes the entire agreement between the parties with respect to the use of the AJA Software licensed hereunder and supersedes all prior or contemporaneous understandings regarding such subject matter. No amendment to or modification of this License will be binding unless in writing and signed by AJA. Any translation of this License is done for local requirements and in the event of a dispute between the English and any non-English versions, the English version of this License shall govern.

Introduction

The SRExpress application controls transfer of files from Sony SR-R1 digital recorders to RAID storage connected to a PC or a Macintosh computer. A KONA 3G card for Mac or PC, or an Io XT for Thunderbolt-equipped Macs, serves as the intermediary device for file capture between the recorder and the computer with RAID. Once transferred, the files can be edited.

Note: only one AJA board is supported per system. For example, if you have two Kona 3G boards installed in one computer, only one of the two boards will work with SRExpress, and you will not be able to choose which one.

File Formats

The SRExpress application transfers MXF (.mxf) file types from the Sony recorder to the computer with RAID.

Features

- Controls the recorder to perform file transfers to the Mac or PC with RAID
- Selects files in batches or individually
- Transfers files using 3G SDI and Thunderbolt connections
- Allows preview during transfer, or preview can be turned off

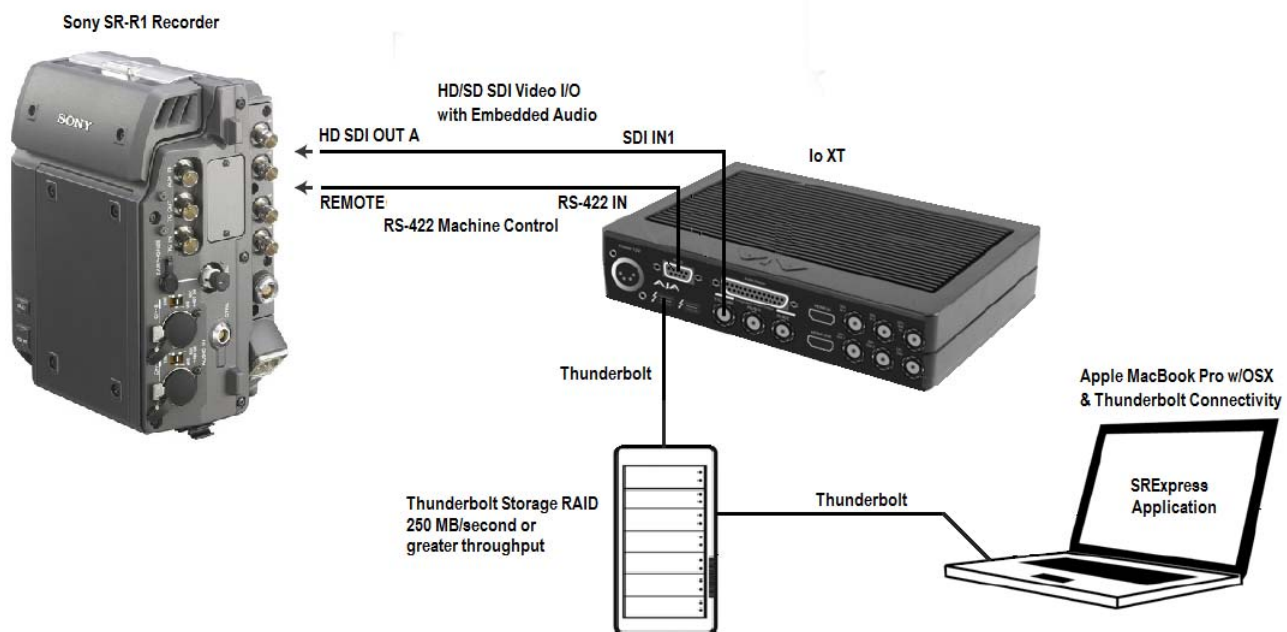
I/O Connections

System interconnections differ slightly depending on whether you are using a Mac with Io XT or a PC or Mac with KONA 3G.

Connections for Mac and Io XT

Mac and Io XT systems are interconnected as follows:

1. Ensure power is OFF for all devices.
2. Connect Sony REMOTE to Io XT RS-422 IN (control connection).
3. Connect Sony HD SDI OUT A to Io XT SDI IN1 (video/audio data connection).
4. Connect a 250 MB/second or faster RAID drive to a Thunderbolt-enabled Macintosh computer.
5. Connect an Io XT Thunderbolt port to the second Thunderbolt port of the RAID storage drive.
6. Make all other connections as explained in the manual for each device.
7. Switch power ON for all devices.

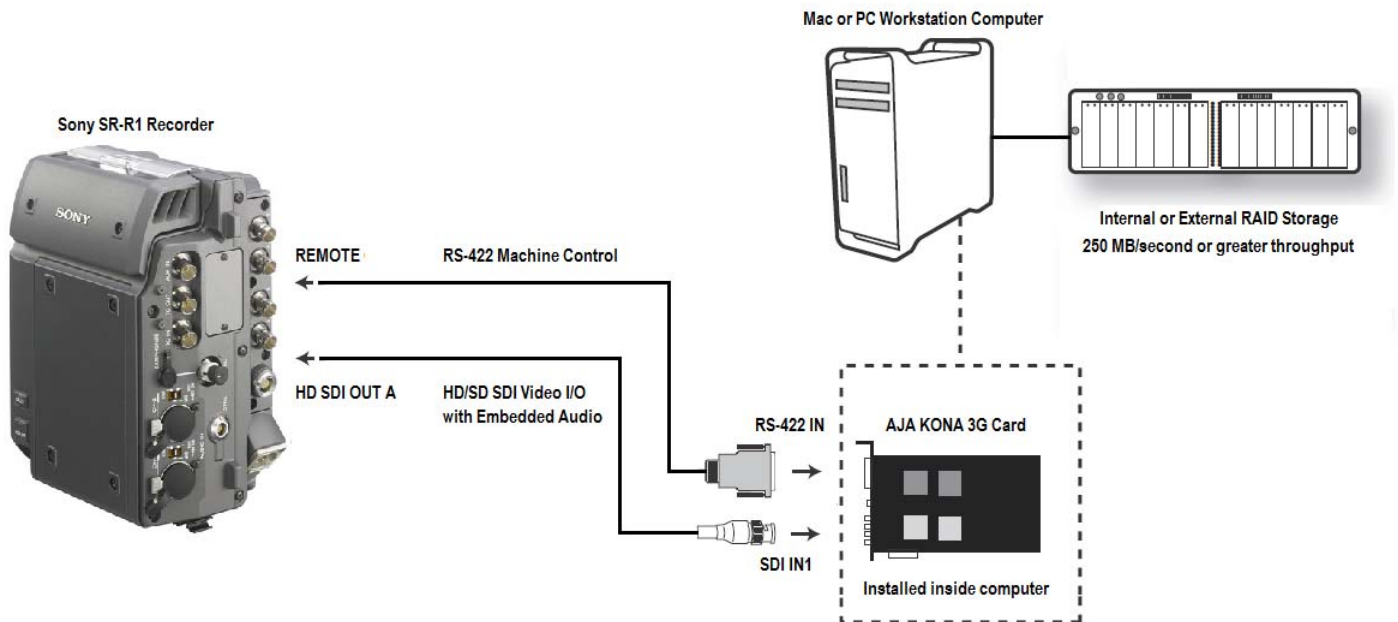


AJA SRExpress System Interconnections for Mac with Io XT

Connections for PC or Mac and KONA 3G

PC or Mac and KONA 3G systems are interconnected as follows:

1. Ensure power is OFF for all devices.
2. Install the KONA 3G card as explained in the KONA manual.
3. Install a 250 MB/second or faster RAID drive suitable for video storage.
4. Connect Sony REMOTE to KONA 3G RS-422 IN (control connection).
5. Connect Sony HD SDI OUT A to KONA 3G SDI IN1 (video/audio data connection).
6. Make all other connections as explained in the manual for each device.
7. Switch power ON for all devices.



AJA SRExpress Typical System Interconnections for PC or Mac with KONA 3G

Software Installation

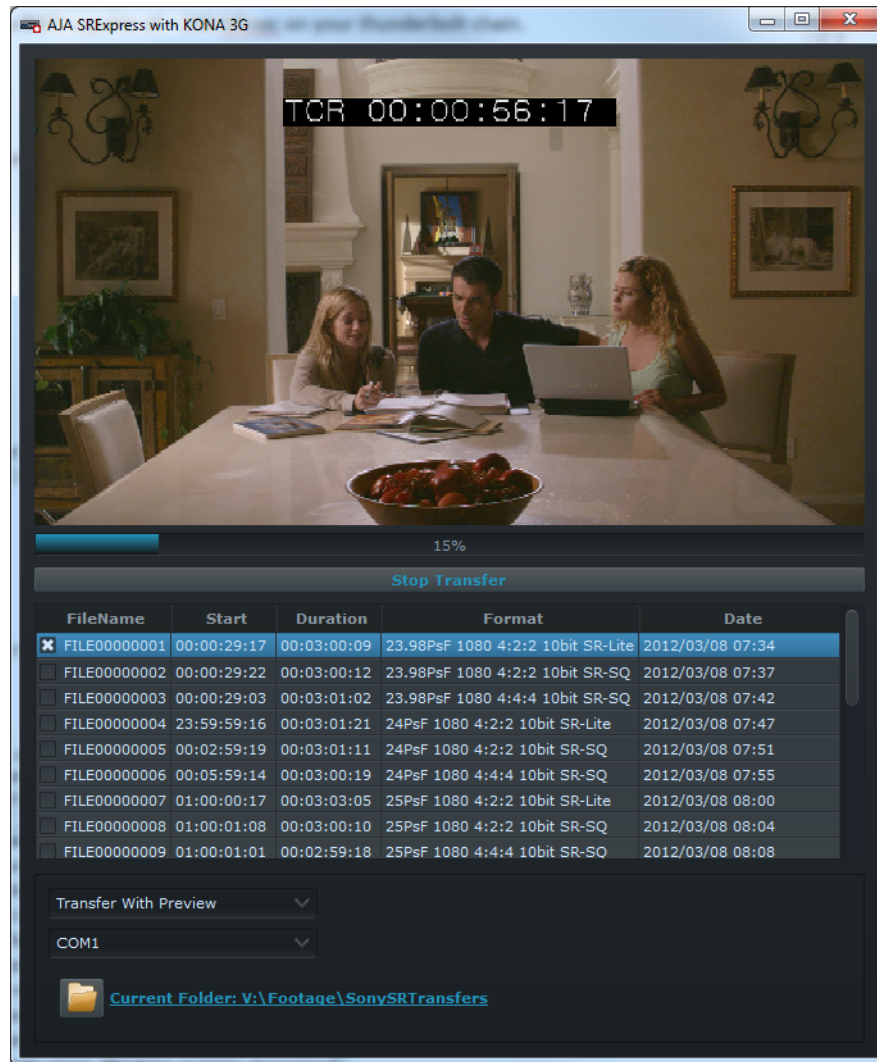
Install the AJA SRExpress application as follows:

1. Install software on the computer according to the instruction manuals for each of the devices. There may be software for the Sony SR-R1, the RAID, the Io XT or KONA 3G, video editing software, and software for viewing MXF files.
2. Download the AJA SRExpress software from the AJA web site, aja.com. First locate the Io XT or KONA 3G product page, and then look for downloads.
3. Copy the SRExpress application disk image (DMG) to your Mac or the .msi installer file to your PC.
4. Double-click the DMG or .msi installer file and follow the prompts to install the application on the Mac or PC.

Using the AJA SRExpress Application

The AJA SRExpress application offers a very quick and easy-to-use interface for transferring .mxf files from the Sony SR-R1 recorder to the Macintosh computer system where the files can be used for editing.

The following illustration and text describe the user interface controls.



AJA SRExpress User Interface

Main Selections

Start/Stop Transfer—Click to start or stop transferring selected files.

File List—Lists files on the Sony SR-R1 available for transfer. Click to select a file. To select multiple files, Control/Cmd-click, or click and drag.

Transfer with/without Preview—Preview displays a still one-per-second preview image of each file as it transfers. Without Preview disables previewing.

Port Selection—Selects the port for communicating with the Sony SR-R1 device.

Current Folder—Selects the destination folder for files transferred to your computer.

Right-Click Menu

Check/Uncheck All Files—Selects or deselects all files in the list (x in the left box).

Rescan File List—Rescans the Sony SR-R1 to discover updates to the file list.

Transferring Files Using SRExpress

The following steps demonstrate typical use of the SRExpress application.

1. On the Sony SR-R1 recorder menu display, select the SRExpress Mode as follows:
 - (a) Press the *System* button on the left.
 - (b) Scroll to *System Format* and press Enter.
 - (c) Select *SRExpress ON*.
 - (d) Scroll to *SET* and press Enter twice. The SR-R1 reboots automatically. Confirm that *SRExpress* mode is displayed on the control panel after reboot.
2. Launch (double-click) the SRExpress application icon on your computer.
3. Select the port connected to the Sony device from the pull-down port menu. The SRExpress application scans the Sony device and lists its files.
4. Click the file or Control/Cmd-click multiple files in the list that you want to transfer from the Sony to the computer. To select all files, right-click and select *Check All Files*. To deselect all files, right-click and select *Uncheck All Files*.
5. Click the *Current Folder* menu to select the destination folder on the computer where you want the transferred files to be placed.
6. Select the *Preview* pull-down menu if you want to view the files as they transfer. When enabled, Preview shows one still frame for each second of video.
7. Right-click and select *Rescan File List* if you have changed files on the Sony SR-R1 and wish to rescan the file list.
8. Click *Start Transfer* to transfer the files. If you want to stop a transfer in progress, click *Stop Transfer*.

After files are transferred to your computer, they are stored on the local RAID drive where they are available for editing using any editing software that can work with .mxf files.

Viewing MXF Files in Your Editor

MXF files may require a Sony SR plug-in to allow real-time viewing in your editing application. These steps explain how to add the plug-in to allow viewing of MXF files in Avid Media Composer or Final Cut Pro (FCP) editing software.

1. Download the SRViewer plug-in version for your editing software from Sony. There are versions for Avid Media Composer (labeled "SRPA-10") and Final Cut Pro (labeled "SRPM-10").
2. Drill down through the zip files and folders to the installer file (.msi or DMG) for your PC or Mac platform.
3. Double-click the installer file and follow the prompts to install the plug-in.
4. Launch the editing application, Avid or FCP, and create a project or open an existing project.
5. Import the MXF file you want to view into the editor.
In Avid, select *File/Link to AMA Files* to locate and select the file.
In FCP, select *File/Import Files* to locate and select the file. You can also drag and drop MXF files onto the FCP application.

The MXF file you selected using the editor plays in the editor window in real time and can be edited using the editor's tools.

